

# Microsoft Teams on Android Enterprise

How to enable fingerprint scanner

Microsoft Teams on Android devices only supports fingerprint scanning. Face Recognition and Iris Scanning is not support.

- If you have an Android device that only supports face recognition (i.e. Pixel 4, Pixel 4XL) you will only have the option to use an alpha-numeric PIN.

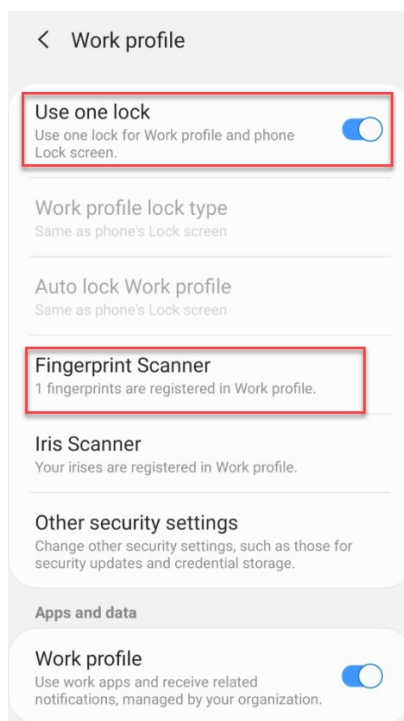
## Requirements

- Enrollment of Android device in AirWatch's Android Enterprise environment
- Download Intune Company Portal
- Download and sign in to Microsoft Teams

## Instructions

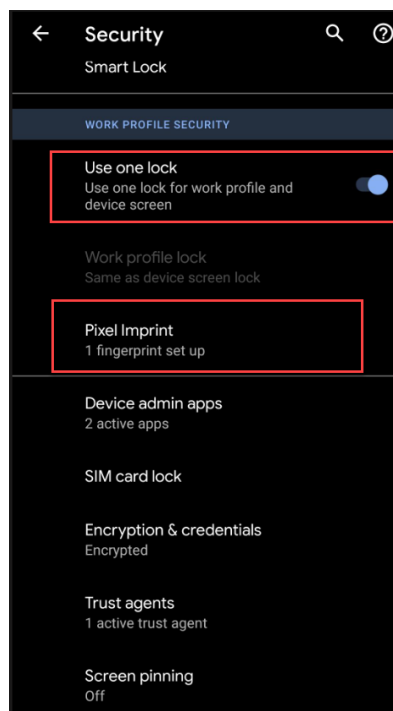
### Samsung Devices

Open settings and search for 'Work Profile'. Ensure **Use one lock** is enabled and that you have a fingerprint registered under this profile.



### Google Pixel Devices

Open settings and search for 'Work Profile'. Open the option for **Work Profile Security**. Ensure **Use one lock** is enabled and that you have a fingerprint registered under this profile.



- If you do not have a fingerprint set up in this profile, proceed to add one.
- Once this has been completed, you may need to force close your Microsoft Teams app in order for the application to request your fingerprint instead of a PIN.